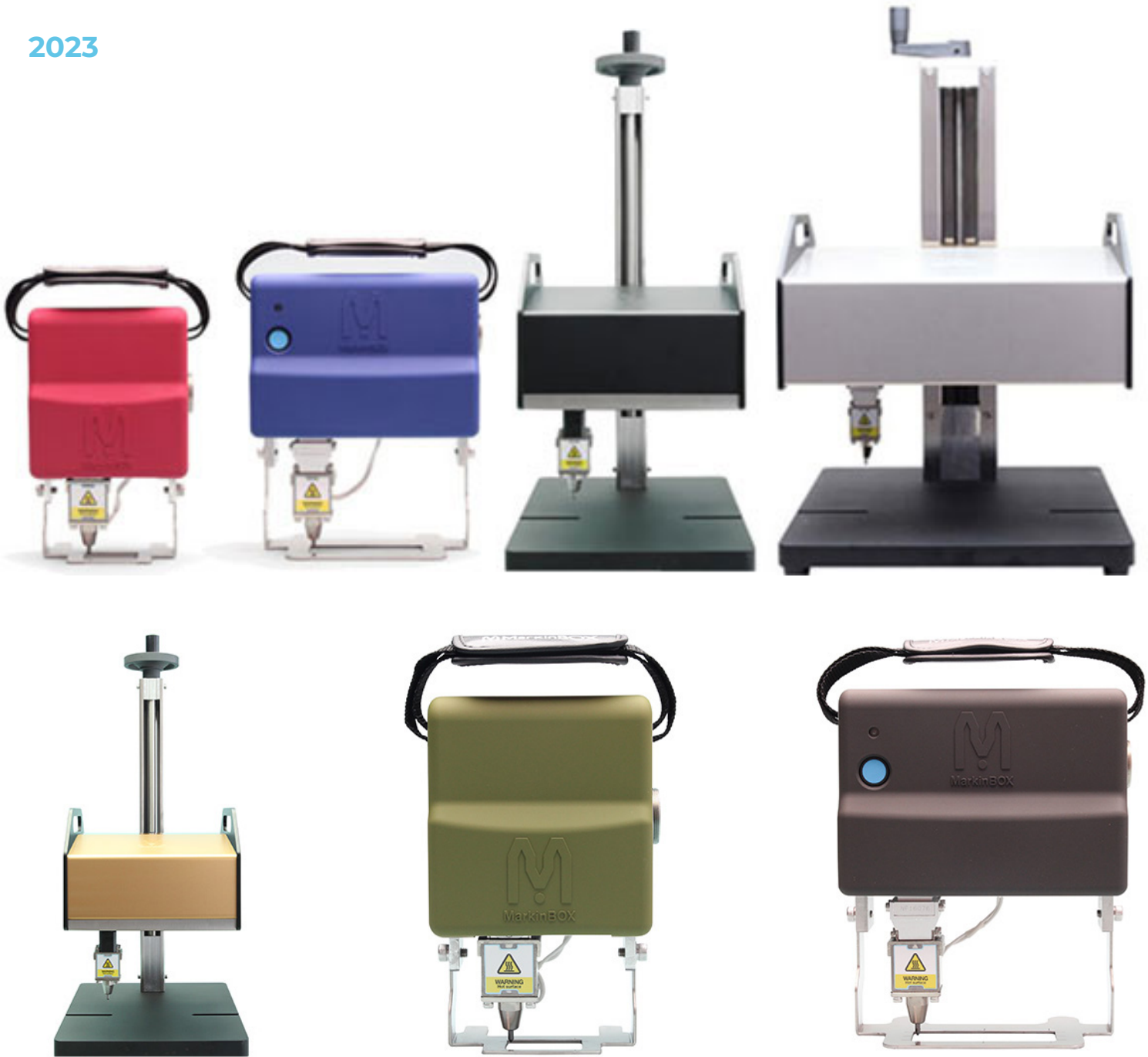


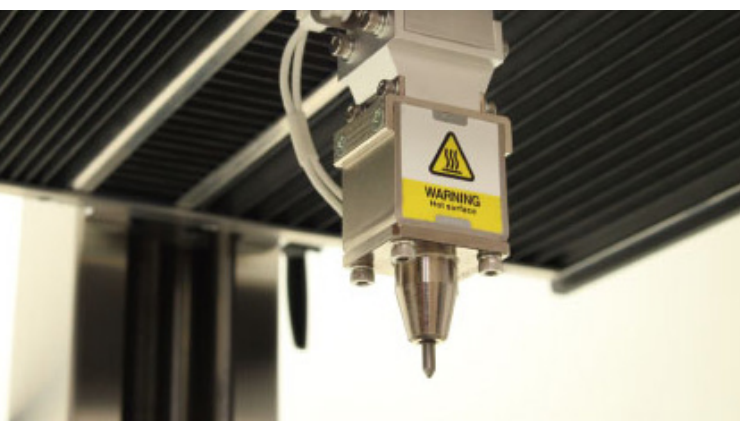
2023



# M MarkinBOX®

DOT PEEN ENGRAVERS - ELECTRIC UNIT - BENCH-TOP OR PORTABLE

---





# NEVER TRACKLESS

permanent mark with electric pinmarker





# MB3315S - Compact Sized Portable Marker

Marking Area: X Axis 33mm wide x Y Axis 15mm high

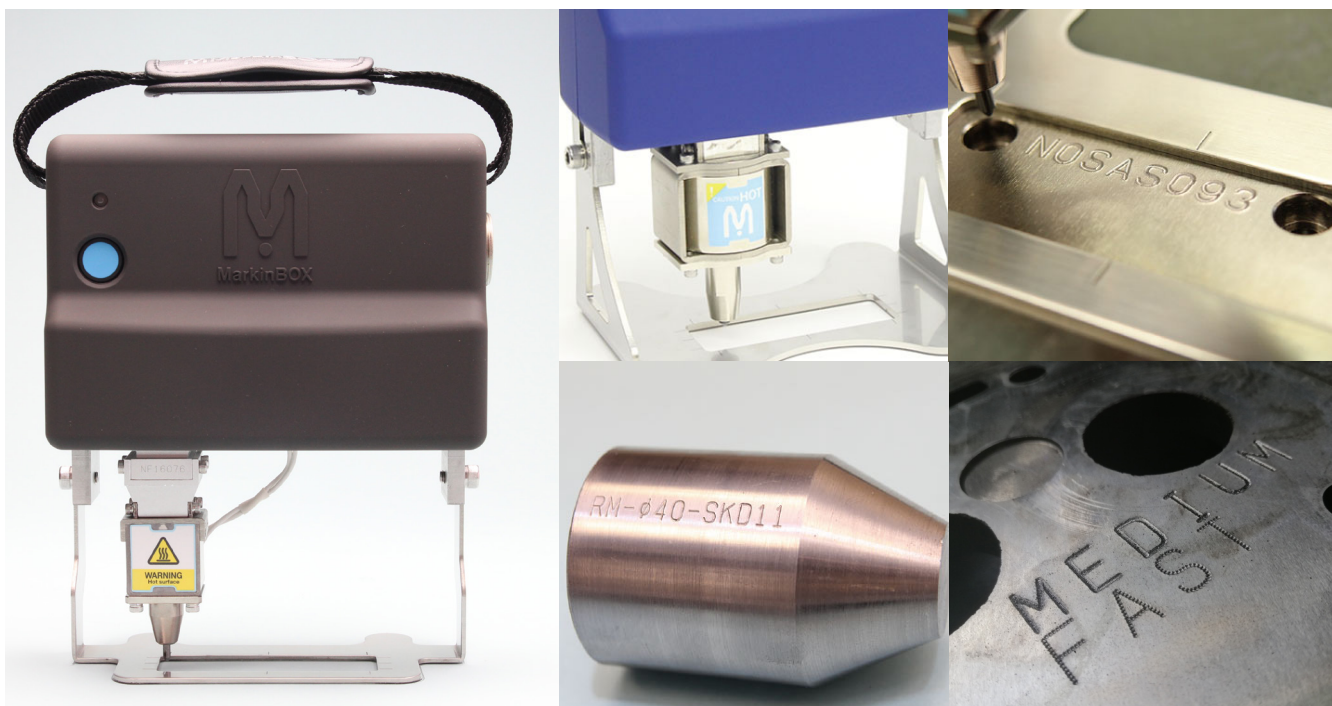
**Includes:** MB3315S unit, MB2s Controller, 3M cable + Unlimited Software License for Phone, Tablet and PC



# MB8020S - Medium Sized Portable Marker

Marking Area: X Axis 80mm wide x Y Axis 20mm high

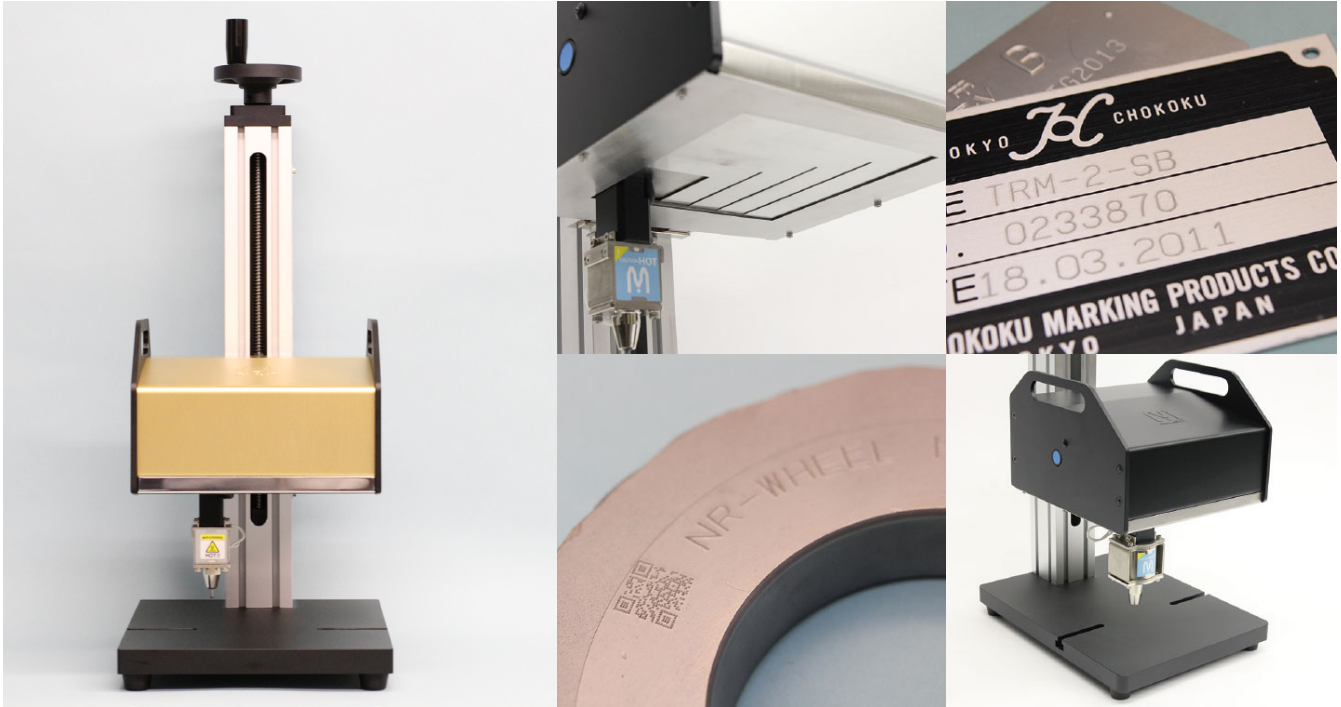
**Includes:** MB8020S Unit, Big Solenoid MB2S Controller, 3M cable + Unlimited Software License for Phone, Tablet and PC



# MB1010 - Large Sized Tool Post Marker

Marking Area: X Axis 100mm wide x Y Axis 100mm high

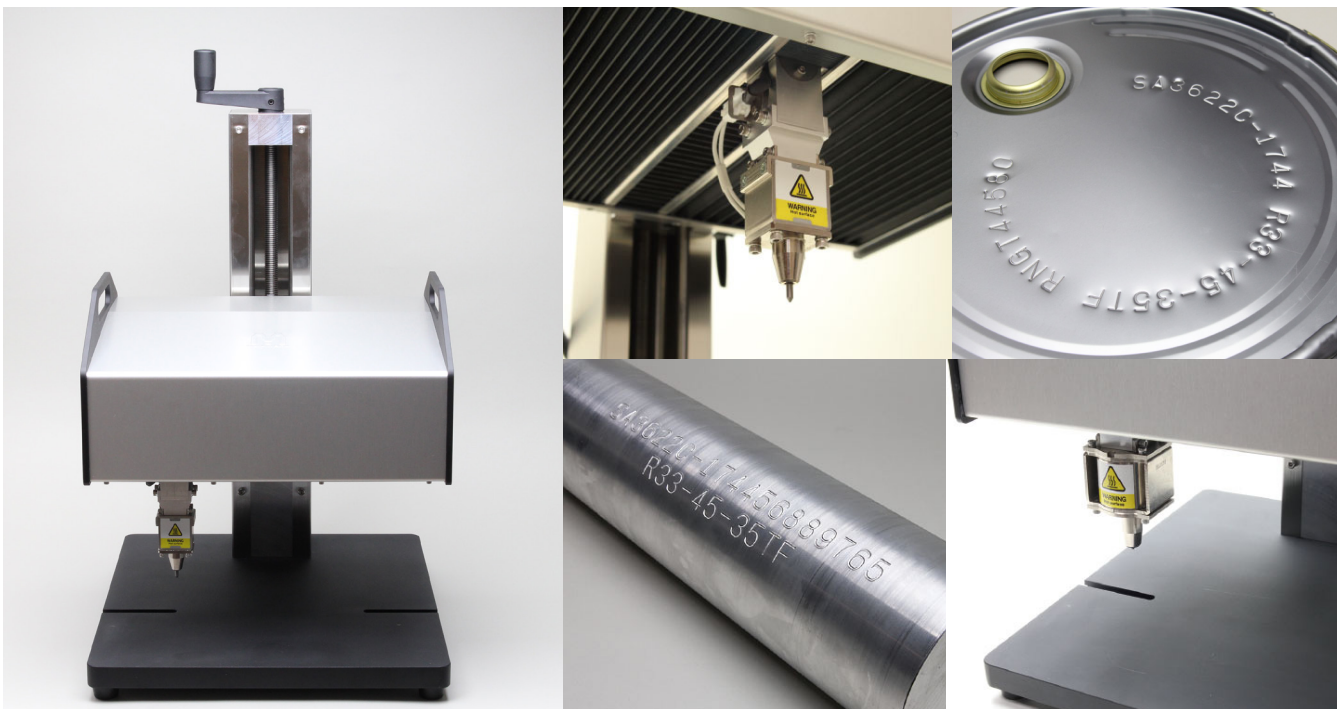
**Includes:** MB1010 Unit, MB2S Controller, 2M Cable + Tool Post + Unlimited Software License for Phone, Tablet and PC



# MB2015 - X-Large Sized Tool Post Marker

Marking Area: X Axis 200mm wide x Y Axis 150mm high

**Includes:** MB2015 Unit, MB2S Controller, 2M cable + Unlimited Software License for Phone, Tablet and PC



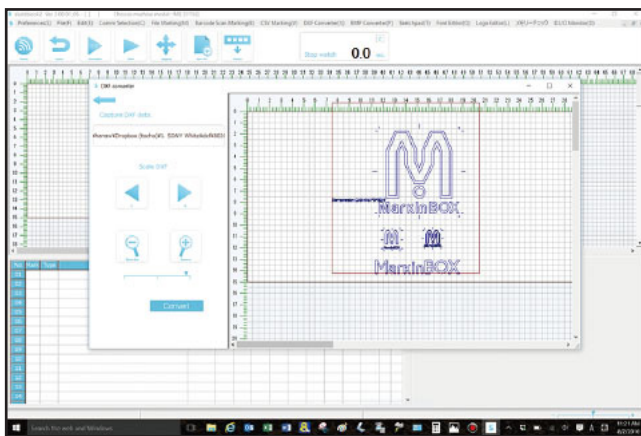
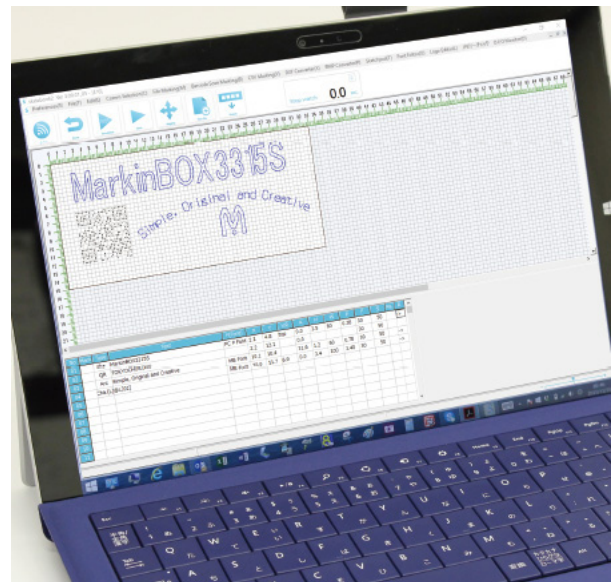


# Sketchbook2 Software

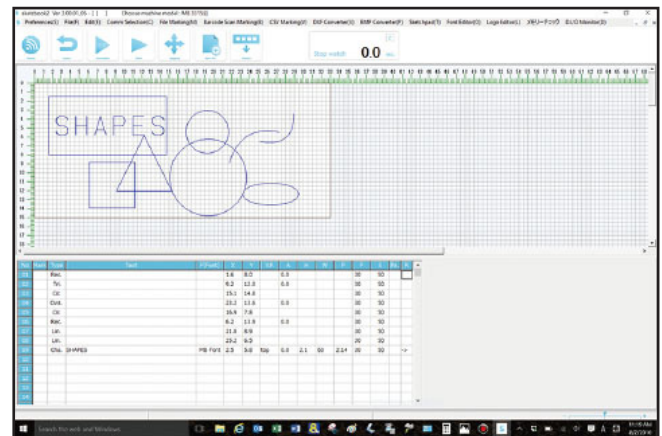
Windows software for MarkinBOX series

Software Features:

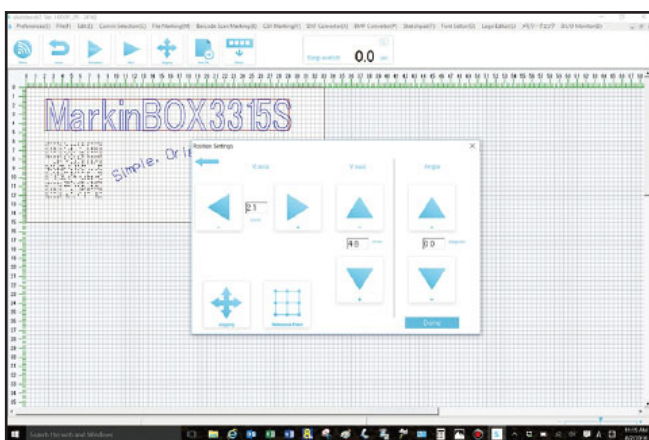
- Easy to use WYSIWYG operation
- One-touch icon-based drawing
- PC Fonts supported
- Auto DXF data conversion
- CSV data can be imported allowing Excel and other CSV data to be easily marked



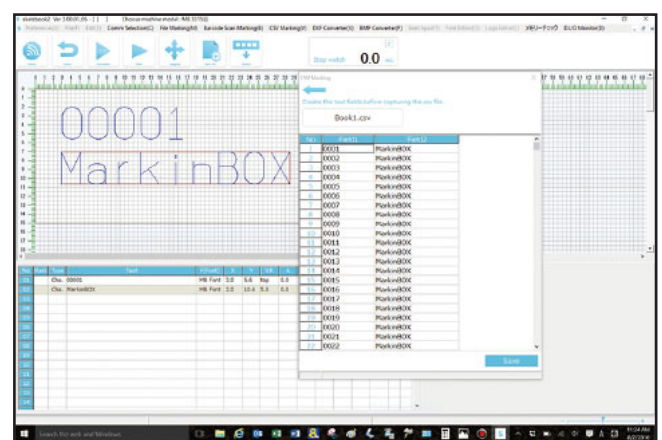
Sense of free drawing on paper and intuitive operation using icons; PC fonts also can be marked as they are. \*PC fonts are supported only when a PC is connected



Rectangles, circles, straight lines, ellipses, triangles, and other figures can be drawn using the shape icons, making simple markings easily created and marked.



The included DXF converter, automatically converts the input data into MarkinBOX marking data. \*Straight lines, circles, ellipses and polygons are supported; splines and letters are not supported.



CSV marking is included as a standard; Excel (CSV format) and other databases can be retrieved with one click.

# Sketchbook2 Lite App

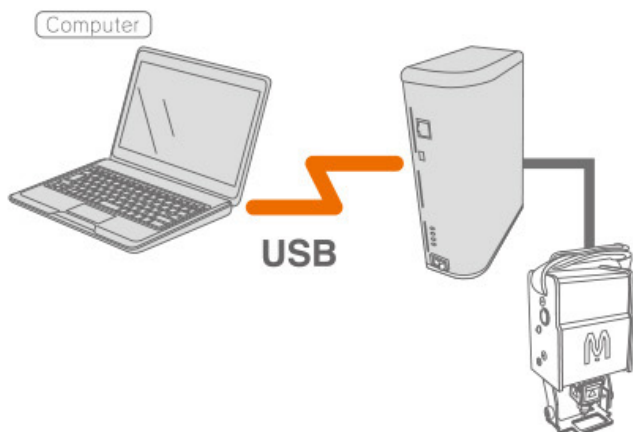
Easy to use WiFi communication with iOS and Android devices.



# Connectivity

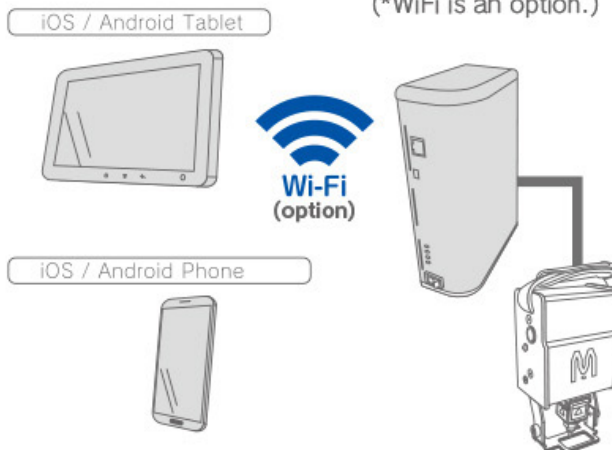
## Connectivity images for MB2S controller

### ① USB communication



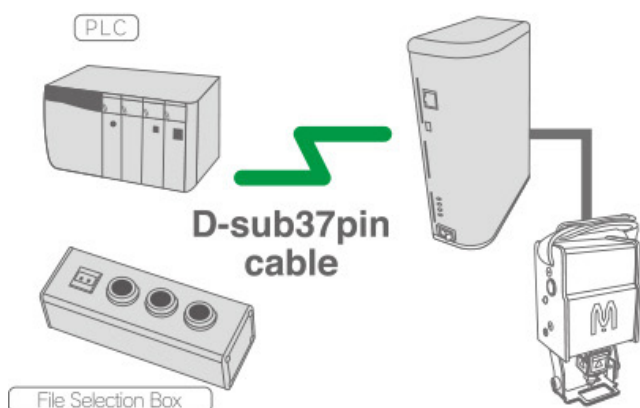
### ② Hand held device communication

(\*WiFi is an option.)



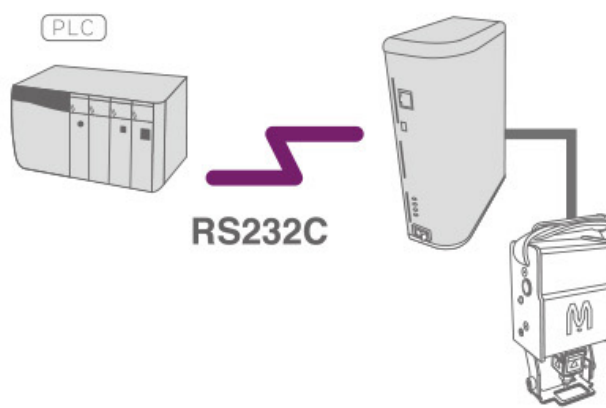
\*Apps "sketchbook touch" is necessary for iOS or Android device and is available to download.

### ③ D.I/O communication



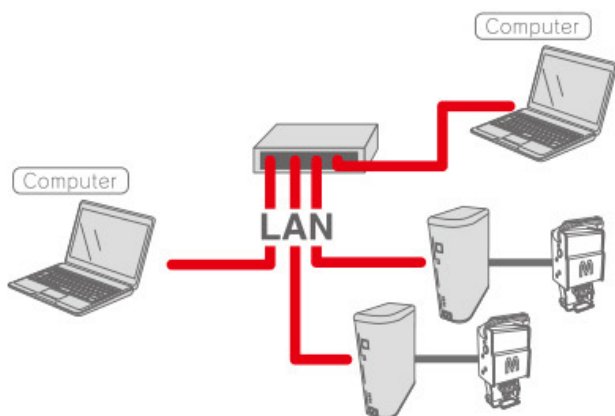
\*Files saved in the MB2S controller are selectable for marking.

### ④ PLC communication

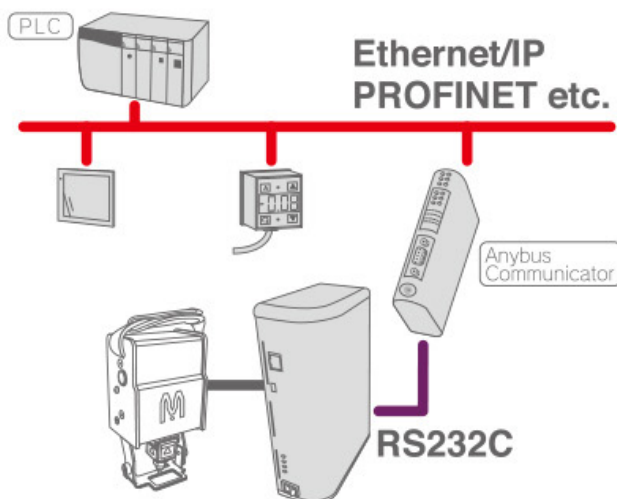


\*The special program in PLC is necessary for this communication.

### ⑤ Network communication

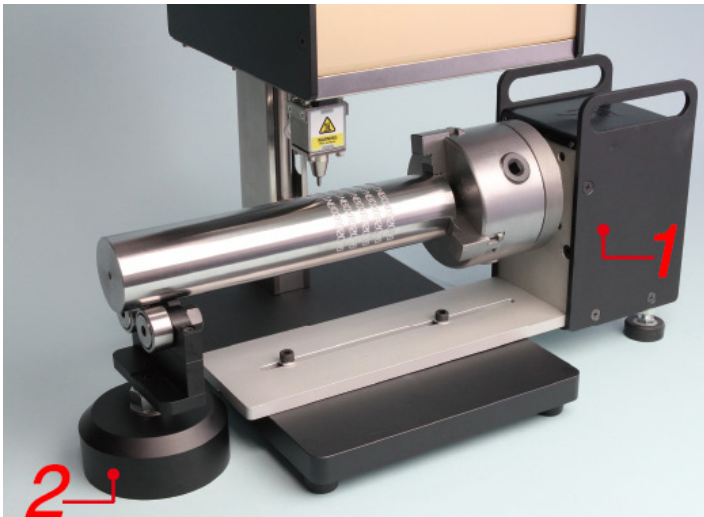


### ⑥ Fieldbus Communication



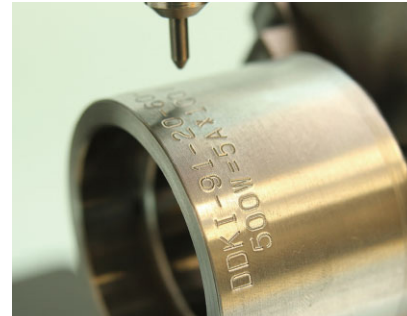


# Rotary device - MarkinBox Chuck Rotary



## Auto Rotation

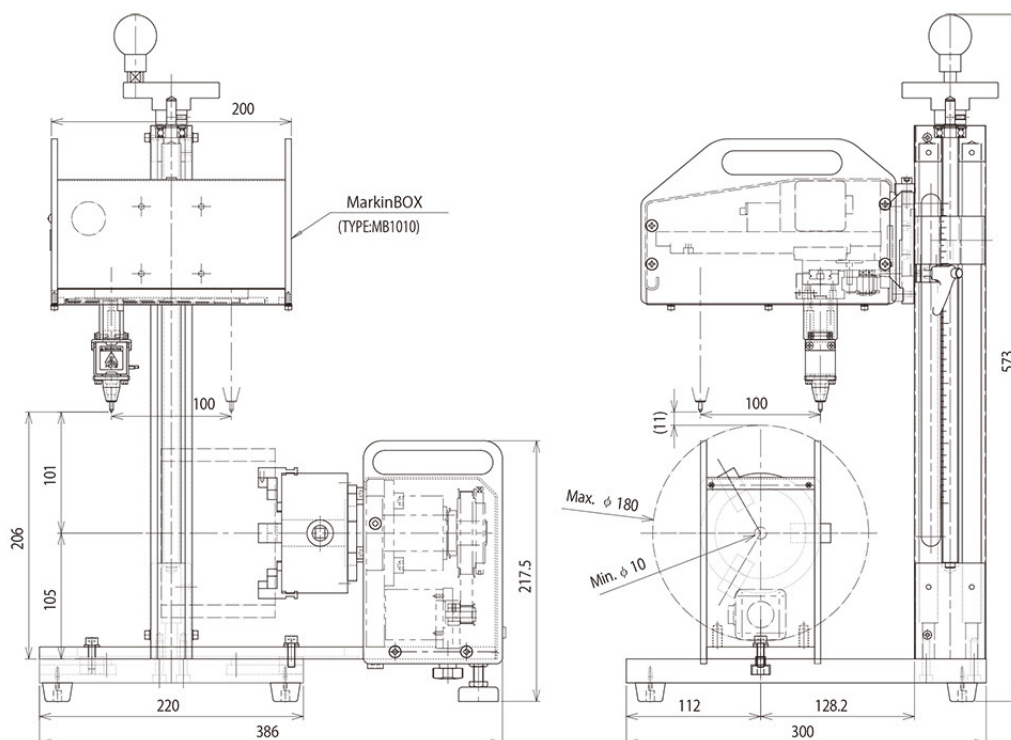
1. Available with all MarkinBOX series
2. A supporter is provided as an option



Mark on the circumference surface

MB Chuck Rotary Specifications				
Chuck specification	Chuck type	Grasping method	Work size	Grasp weight
Standard ( $\phi 80$ )	External jaws	Inside diameter grasp (pipe)	$\phi 25 \sim \phi 70 \text{mm}$ (1" ~ 2.7")	Approx. 6kg (13.2lbs)
		Outside diameter grasp	$\phi 10 \sim \phi 25 \text{mm}$ (0.4" ~ 0.9")	
Large (option) ( $\phi 100$ )	External jaws	Outside diameter grasp	$\phi 22 \sim \phi 63 \text{mm}$ (0.9" ~ 2.4")	
		Inside diameter grasp (pipe)	$\phi 30 \sim \phi 90 \text{mm}$ (1.2" ~ 3.5")	
	Internal jaws	Outside diameter grasp	$\phi 10 \sim \phi 30 \text{mm}$ (0.4" ~ 1.1") $\phi 30 \sim \phi 80 \text{mm}$ (1.2" ~ 3.1")	
External dimensions / Weight		100(W) $\times$ 196(D) $\times$ 218(H) / 4.1kg (9lbs)		

## MB Chuck Rotary Overview MB1010 Specification





# MarkinBox Accessories



FILE SELECTION BOX



FOOT SWITCH



HANDS FREE POCKET



HANDS FREE MAGNET



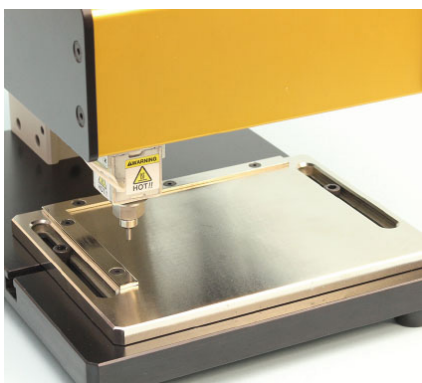
MAGNET GUIDE



DRIP & DUSTPROOF



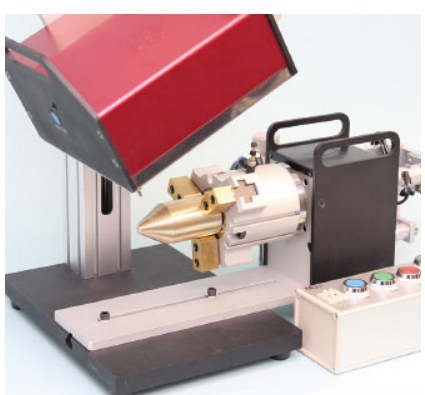
MB2S CONTROLLER L BRACKET



WORKPIECE POSITIONING TOOL



ENCLOSURE



ANGLE INDEX



AUTO Z AXIS

LEARN MORE ON OUR WEBSITE [MARKINBOX.COM.AU](http://MARKINBOX.COM.AU)

**LIVETOOLS.**<sup>®</sup>  
Machine Tool People.  
[www.livetools.com.au](http://www.livetools.com.au)

[sales@livetools.com.au](mailto:sales@livetools.com.au)  
+61 2 4017 0198  
115 Young Street, Carrington  
NSW 2294 Australia