



# M MarkinBOX®

DOT PEEN ENGRAVERS - ELECTRIC UNIT - BENCH-TOP OR PORTABLE

## MB1010

MARKING AREA: 100MM WIDE X 100MM HIGH



## UNIT DESCRIPTION

Comes standard with a tool post stand.

There are two t-slots in the stand base for mounting fixtures and jigs. The large stand option offers a more solid robust stand.

This unit has the option to be hand-held, fixed or mounted for whatever option you need.

Ideal for part marking or plate marking.

## ADDITIONAL ACCESSORY OPTIONS

## PROGRAMMING

Connect to a PC via WiFi, USB or Ethernet Network or integrate into automation system with D.I/O, Ethernet or PLC.

Advanced software is easy to create simple and complex programs & templates for all types of jobs.

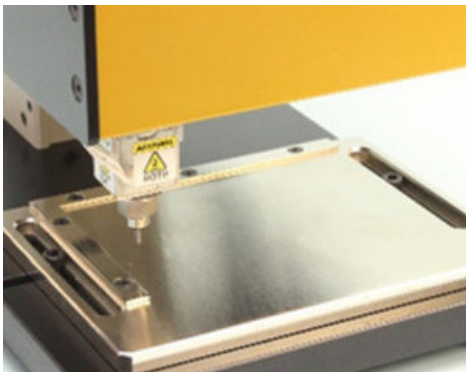
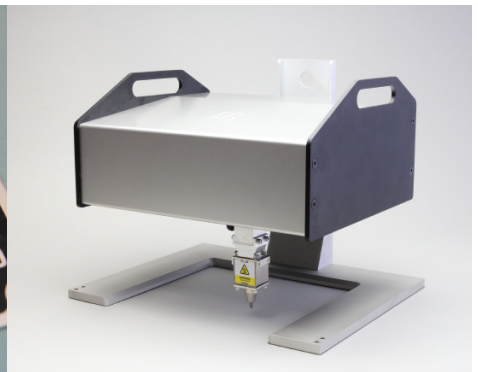


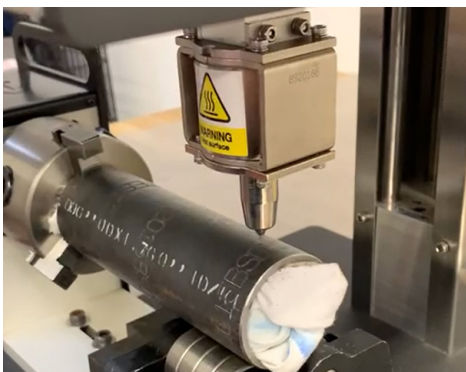
Plate Guide



Plate Example



Portable Foot



BSD Head + Rotary Chuck



Auto-Z Axis Stand



Big Solenoid - Deep Marking (BSD)

## KEY DATA

Power supply	AC adapter, AC100V-240V, 50/60Hz (120W)
Marking Head Weight	4.5kg
Dimensions (inc. Stand)	220mm Wide x 300mm Deep x 573mm High
Marking area	100mm Wide X 100mm High
Software	PC Software, Iphone / Ipad + Android Device, Included Free
Connectivity	WiFi, USB,
Markable materials	Metal (up to about HRC62), plastic, paper, and wood
Warranty	1 year Manufacturers Warranty
Consumables	Carbide Pin, ~1/year frequent marking in stainless, +2 years soft metal