

# M MarkinBOX®

DOT PEEN ENGRAVERS - ELECTRIC UNIT - BENCH-TOP OR PORTABLE

## MB2S2015

MARKING AREA: 200MM WIDE X 150MM HIGH



## UNIT DESCRIPTION

The Markinbox MB2015 is the largest unit in the range with a very large marking area.

The key use is for marking components and plates of a small to medium size. If direct marking is required there is the option for the portable foot.

It is a bench-top unit and comes with an adjustable height stand.

## PROGRAMMING

Connect to a PC via WiFi, USB or Ethernet Network or integrate into automation system with D.I/O, Ethernet or PLC.

Advanced software is easy to create simple and complex programs & templates for all types of jobs.

## ADDITIONAL ACCESSORY OPTIONS

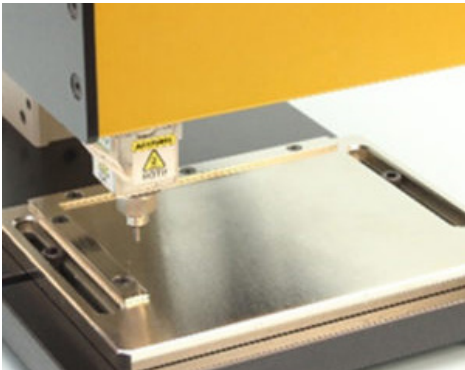
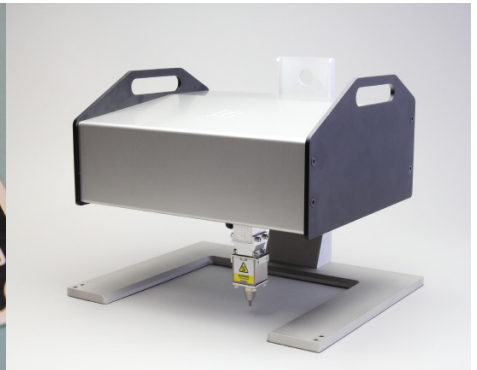


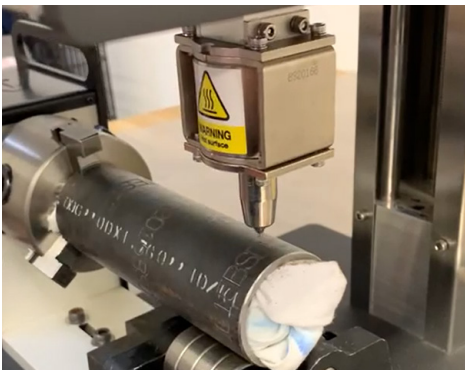
Plate Guide



Plate Example



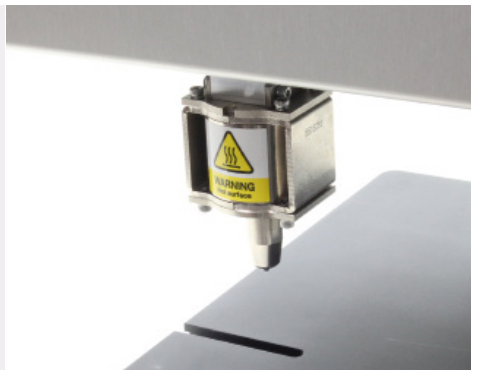
Portable Foot



BSD Head + Rotary Chuck



Auto-Z Axis Stand



Big Solenoid - Deep Marking (BSD)

## KEY DATA

Power supply	AC adapter, AC100V-240V, 50/60Hz (120W)
Marking Head Weight	6.3kg
Dimensions (inc. Stand)	310mm Wide x 370mm Deep x 544mm High
Marking area	200mm Wide X 150mm High
Software	PC Software, Iphone / Ipad + Android Device, Included Free
Connectivity	WiFi, USB,
Markable materials	Metal (up to about HRC62), plastic, paper, and wood
Warranty	1 year Manufacturers Warranty
Consumables	Carbide Pin, ~1/year frequent marking in stainless, +2 years soft metal